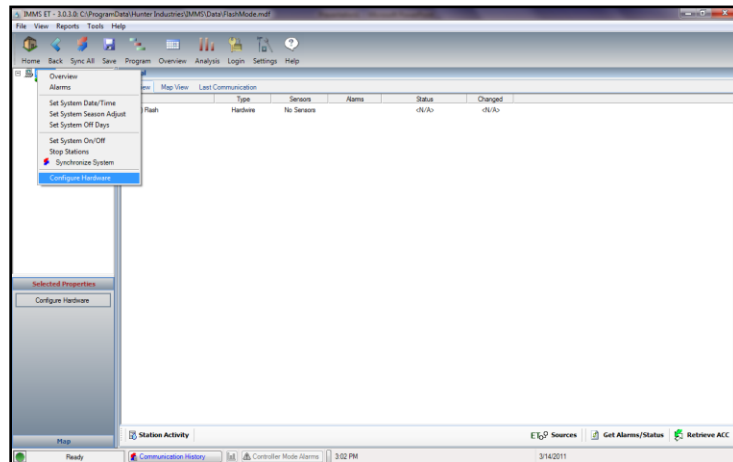
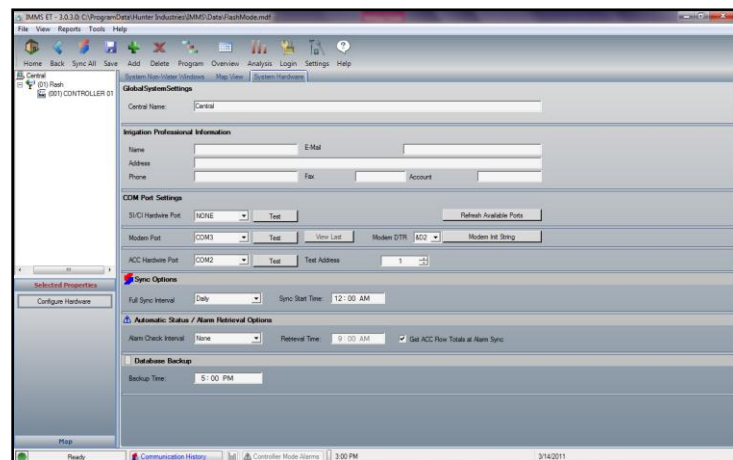


# IMMS Direct Comm Mode

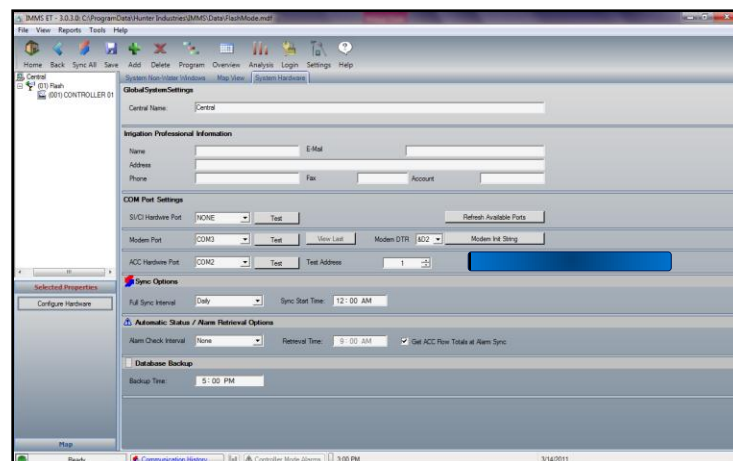
From the IMMS HOME screen, highlight the computer icon in the upper left, then right click. (The drop down window should appear) Choose the “Configure hardware” option, at the bottom of the dropdown box.



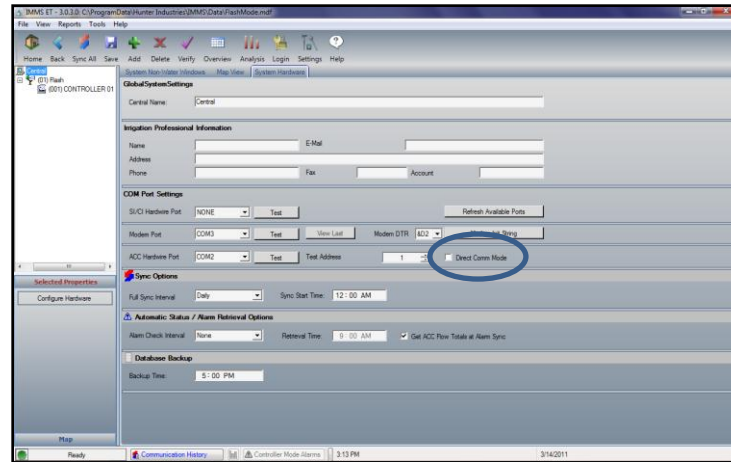
The hardware screen for the computer should open.



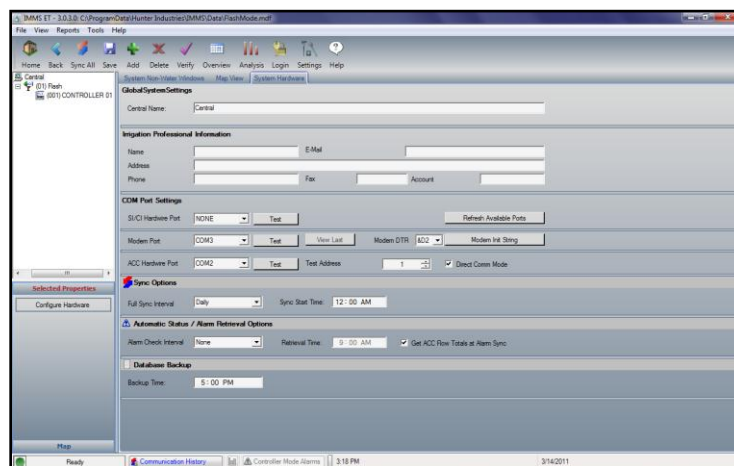
Take your mouse, and hover it over the area designated by the blue box.



Hold down the “Ctrl” button on your keyboard and right click the mouse.



Click on the “Direct Comm Mode” box.



Now connect your USB cable, the controller backpack should activate (The “NO A/C POWER” message will appear). Select the USB port, (No need to worry about an address, “Direct Comm Mode” allows you to retrieve or synchronize the backpack without any address), and start communicating to the backpack.